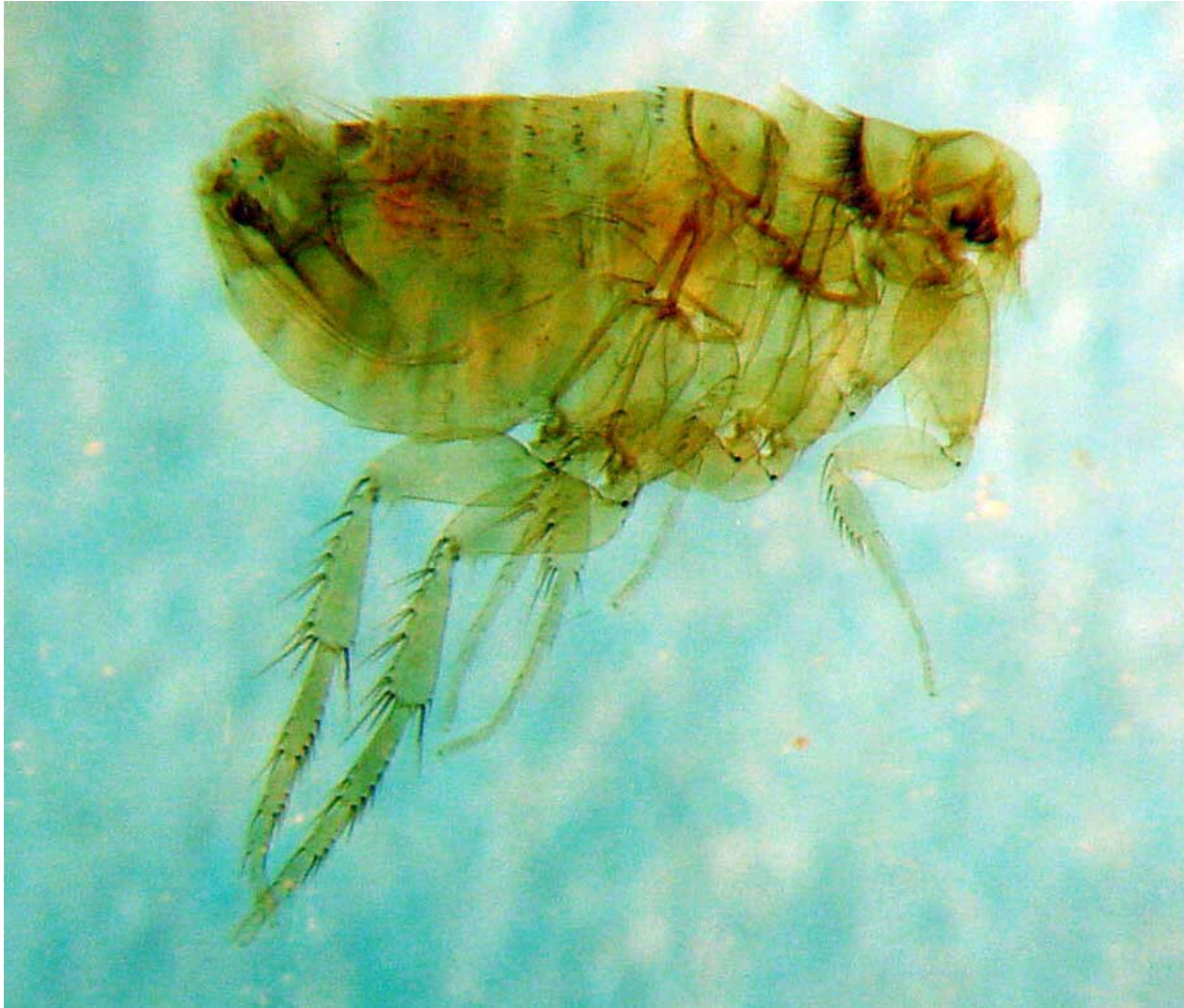
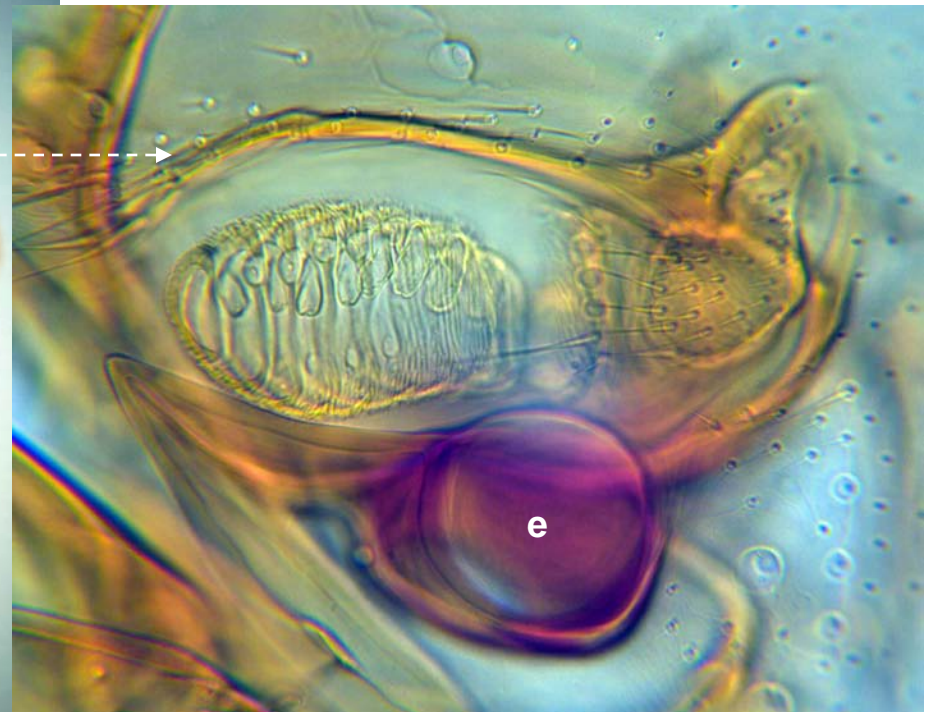
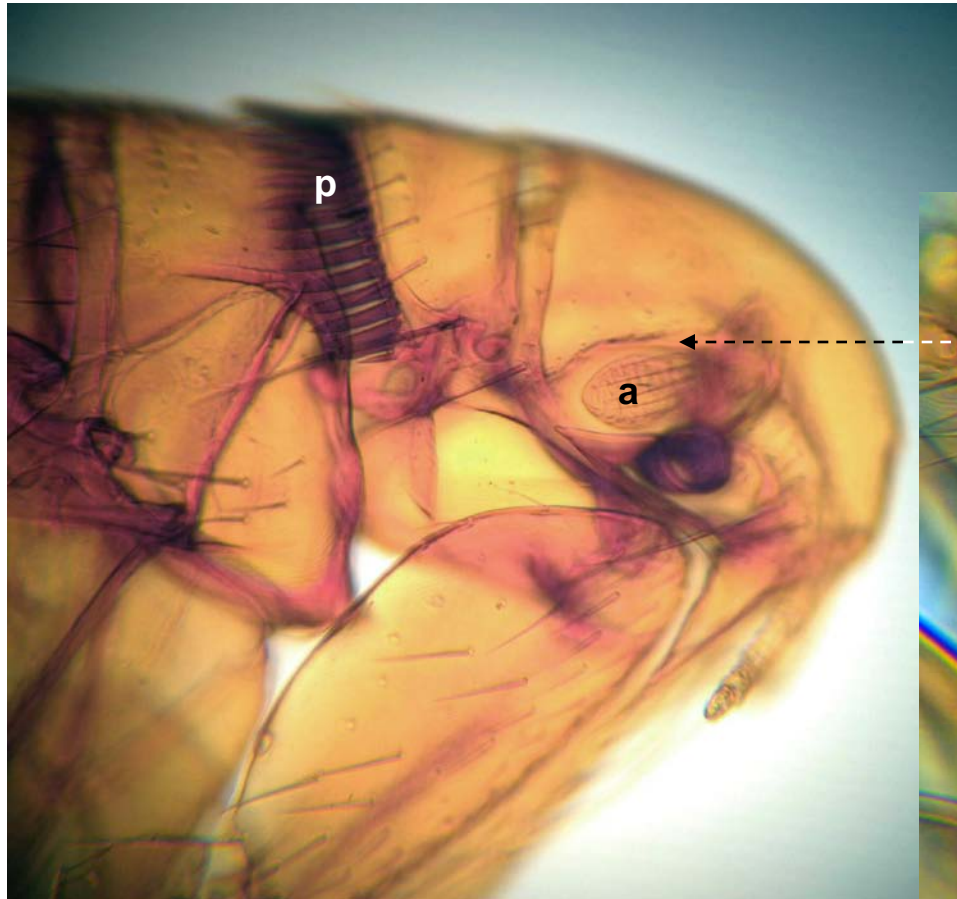


*Odontopsyllus dentatus*, male, entire.

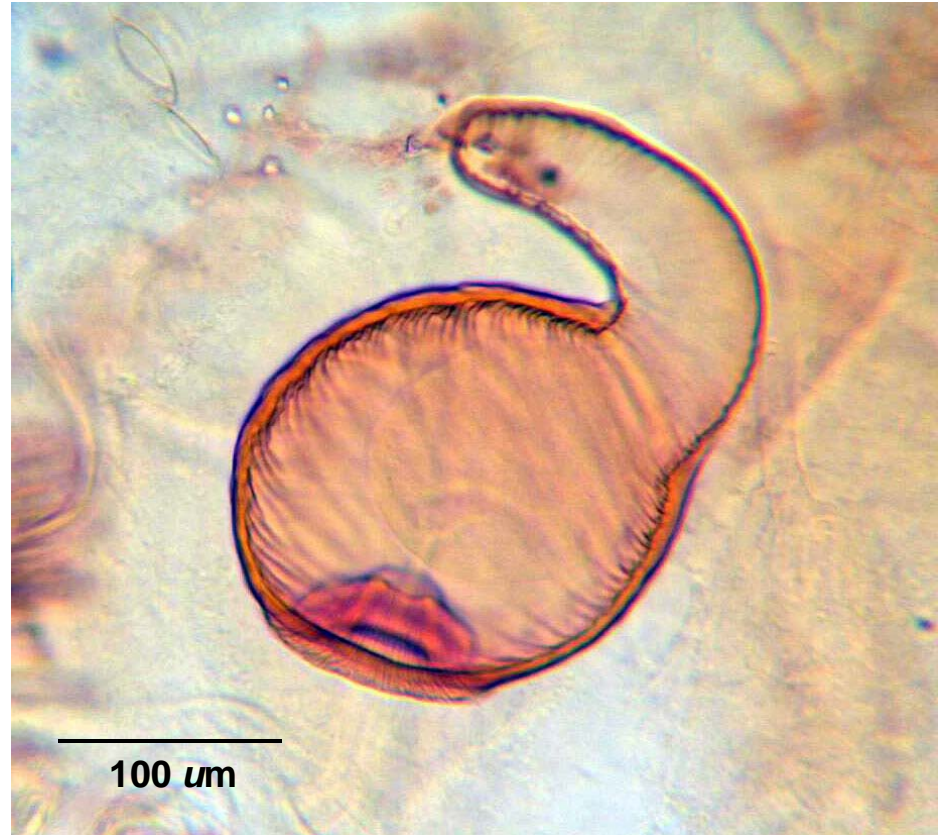
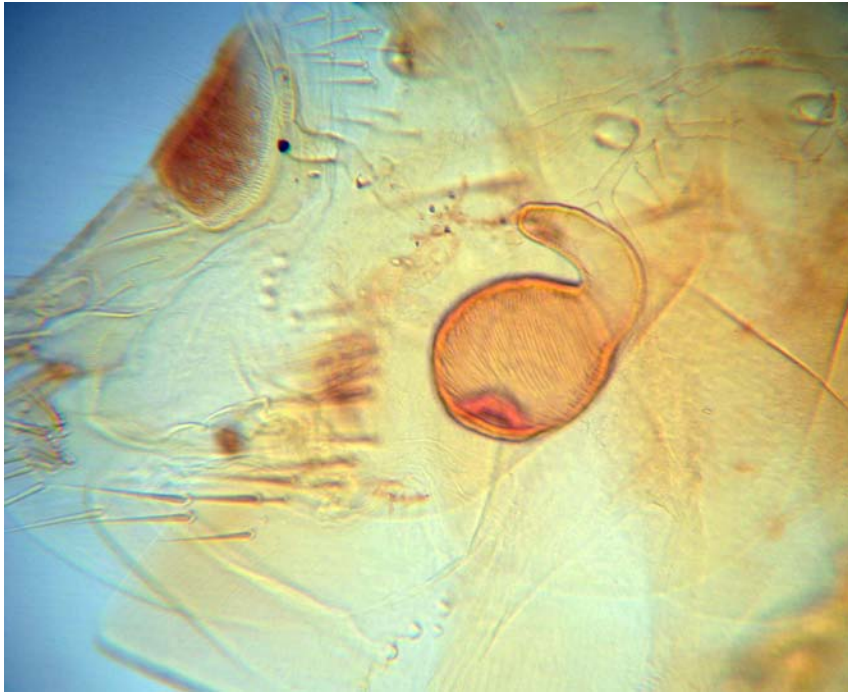


*Odontopsyllus dentatus*: head with prominent eye (e) and antennae (a). Note small spines dorsal to antenna (dashed arrow) and row of spines anterior to eye (solid arrow). Pronotal ctenidium also identified (p).

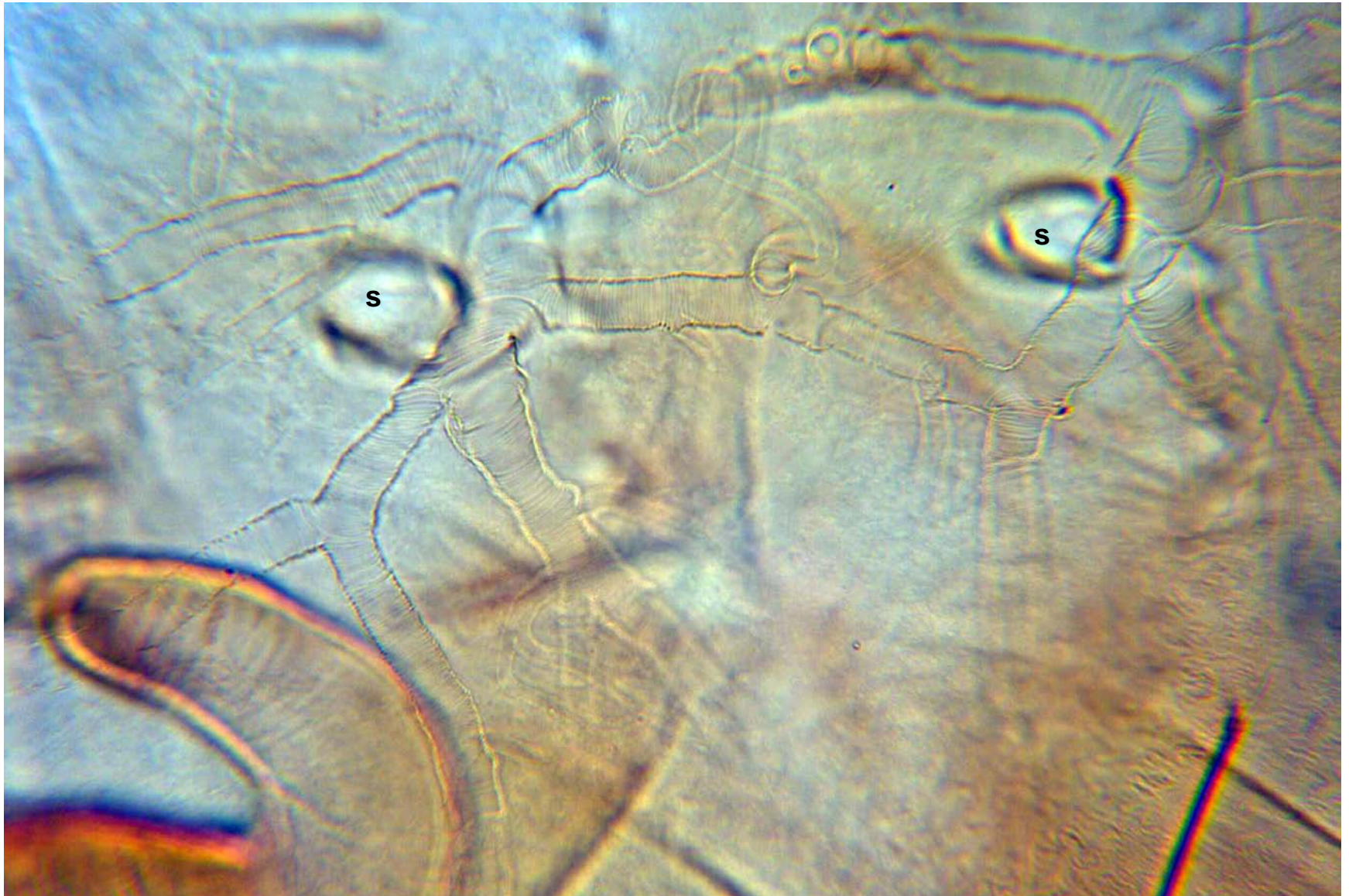




*Odontopsyllus dentatus*, female spermatheca.



*Odontopsyllus dentatus*, female spermatheca lower left (see previous slide) and network of trachea spiracle openings (s).





*Odontopsyllus dentatus*, apical spines on dorsal abdominal segments.

